

Remote Deposit Capture

Browser Installation Guide



Mechanics
COOPERATIVE BANK

1-888-MECHANICS (632-4264) | Mechanics-Coop.com

Member Member
FDIC SIF  EQUAL
LENDER



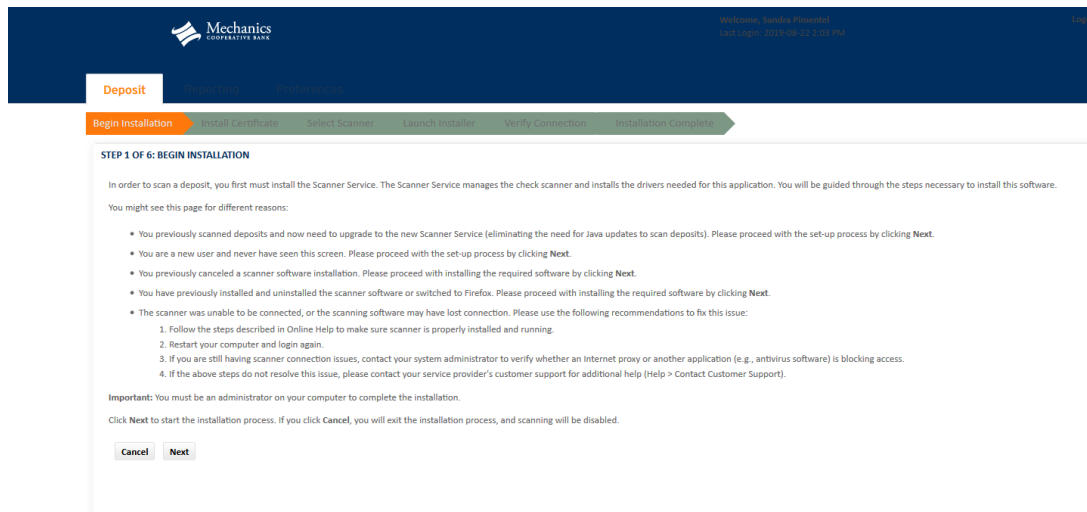
Remote Deposit Capture Installation

Table of Contents

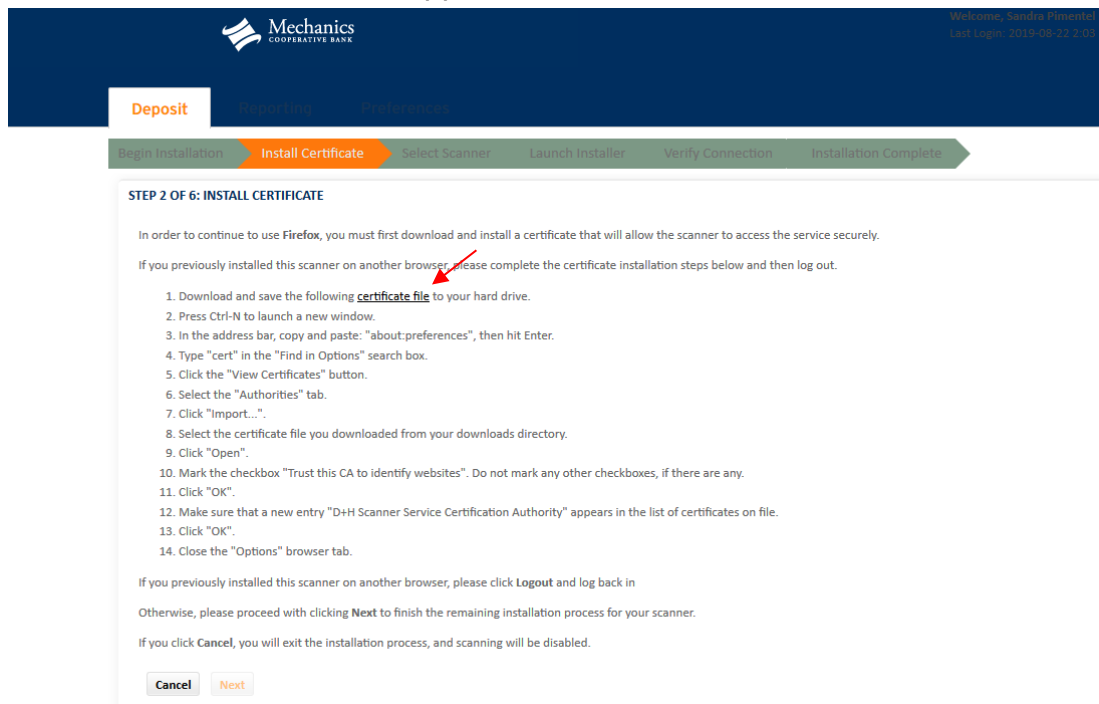
Mozilla Firefox	3
Chrome	10
Internet Explorer.....	13

Mozilla Firefox

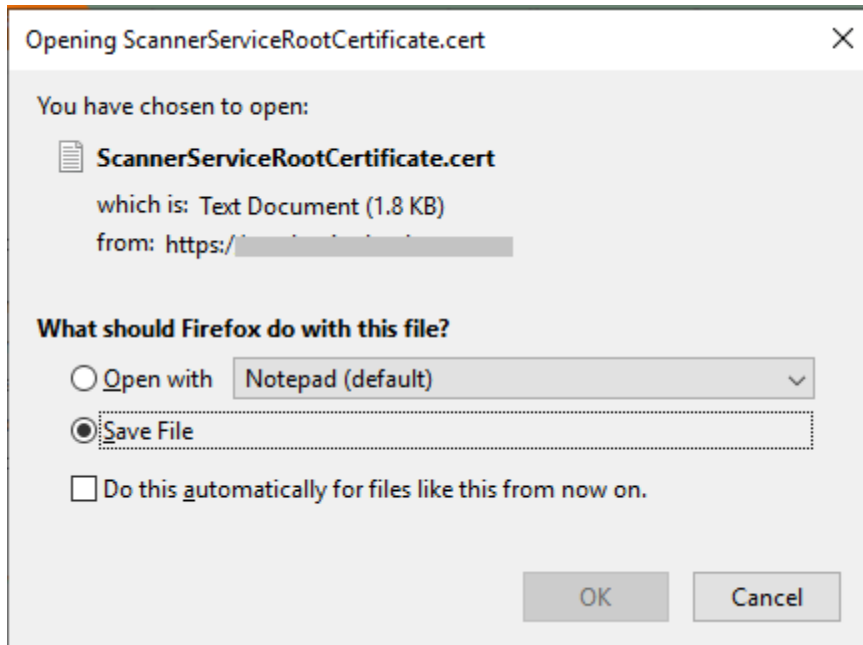
1. The **Begin Installation** screen appears. Click **Next** to continue with scanner installation.



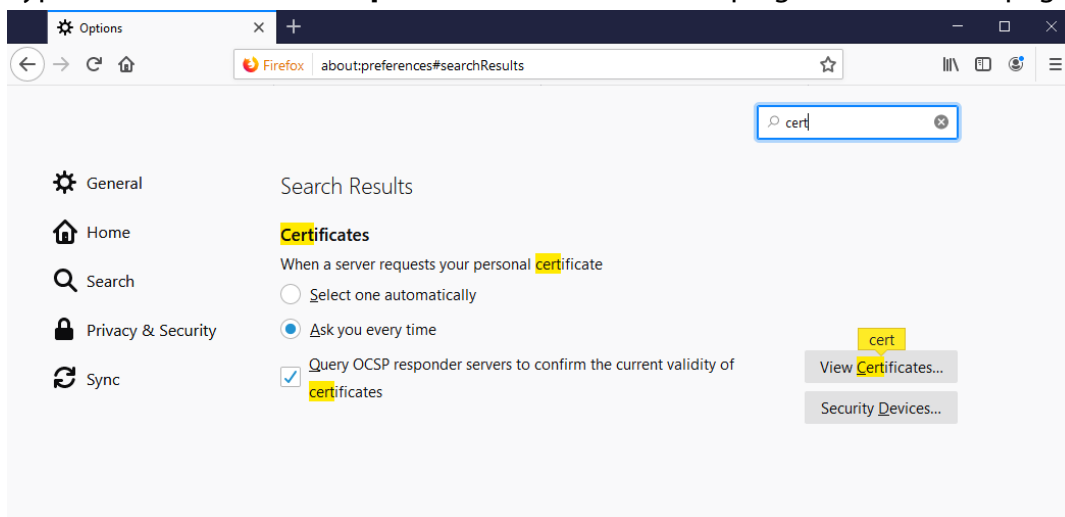
2. The **Install Certificate** screen appears. Click the **Certificate File** link.



3. A notification window appears. Select the **Save File** option under the question "What should Firefox do with this file?" Then click **OK**.

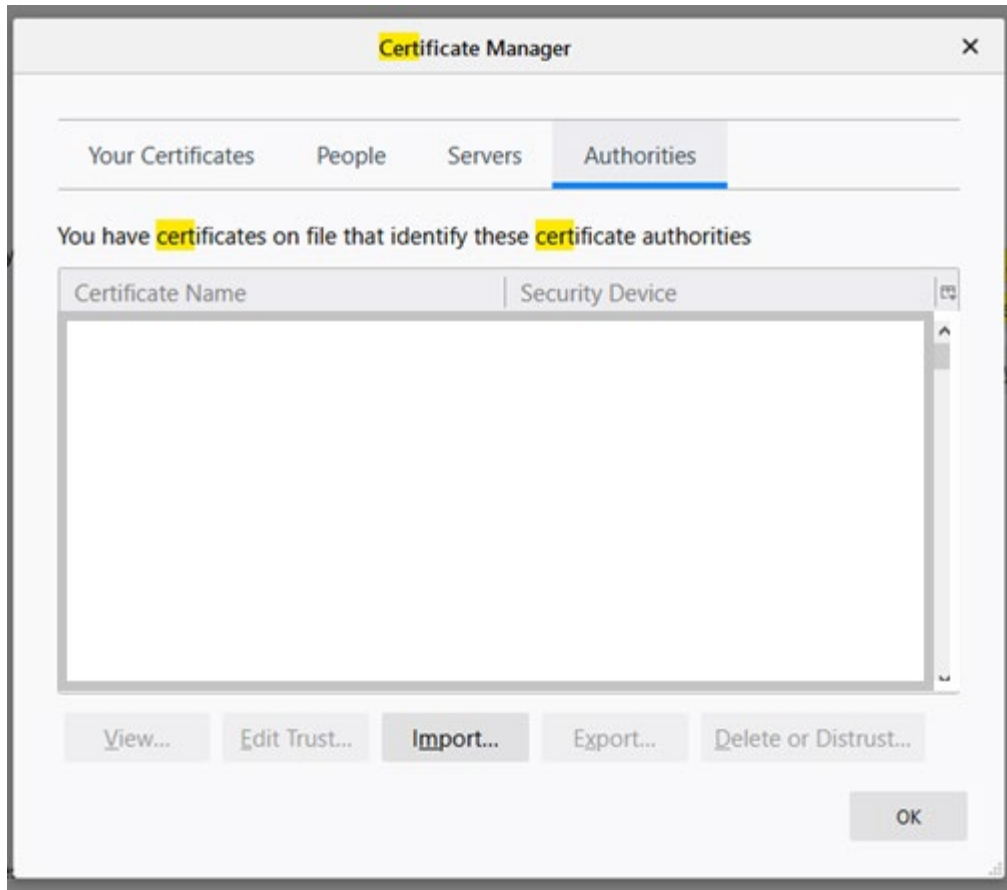


4. Press Ctrl-N to launch a new window.
5. In the address bar type in "about:preferences" and hit enter.
6. Type "cert" in the **Find in Options** search box at the top right corner of the page.

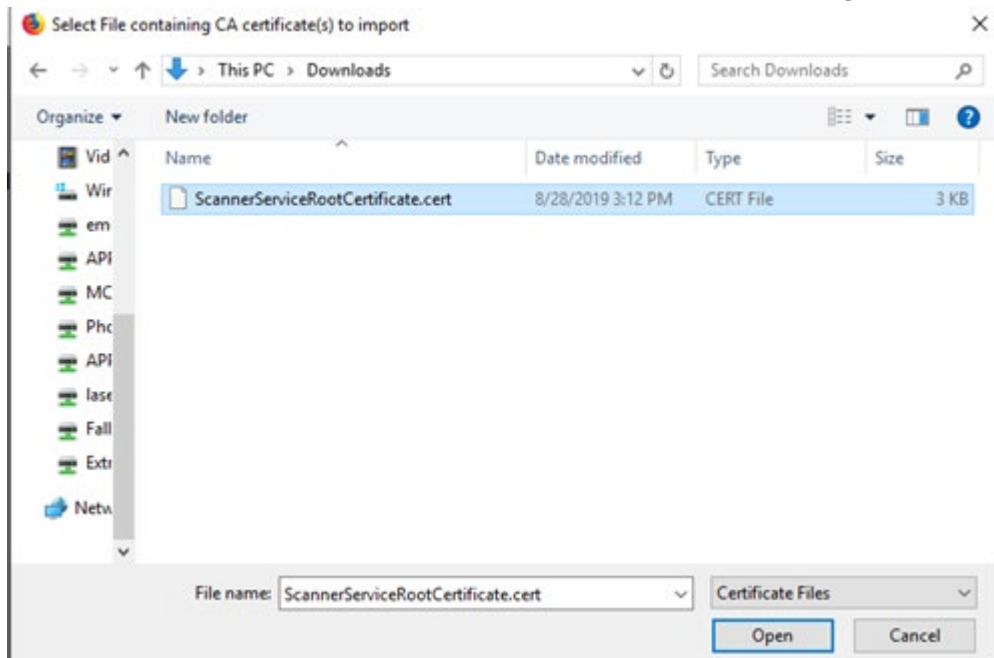


7. Click the **View Certificates** button.

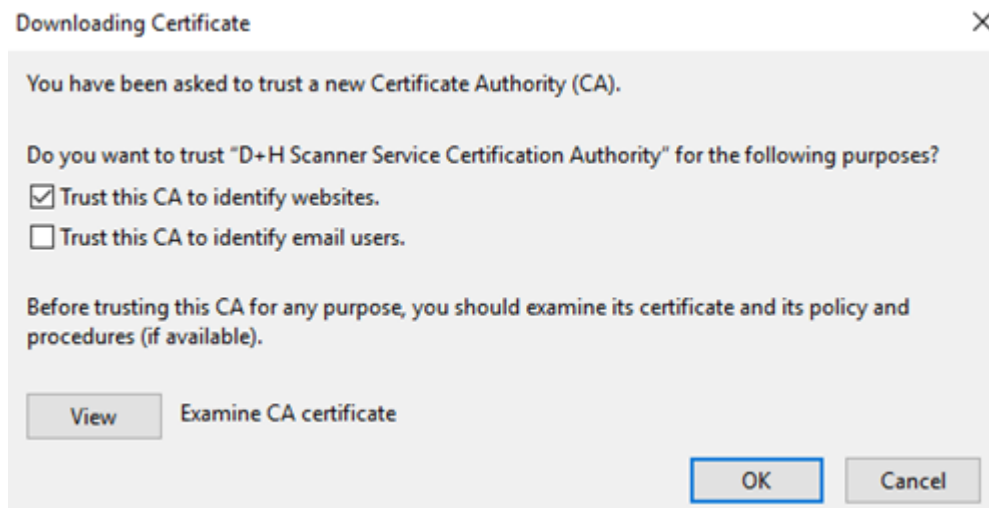
8. Select the **Authorities** tab and click **Import**.



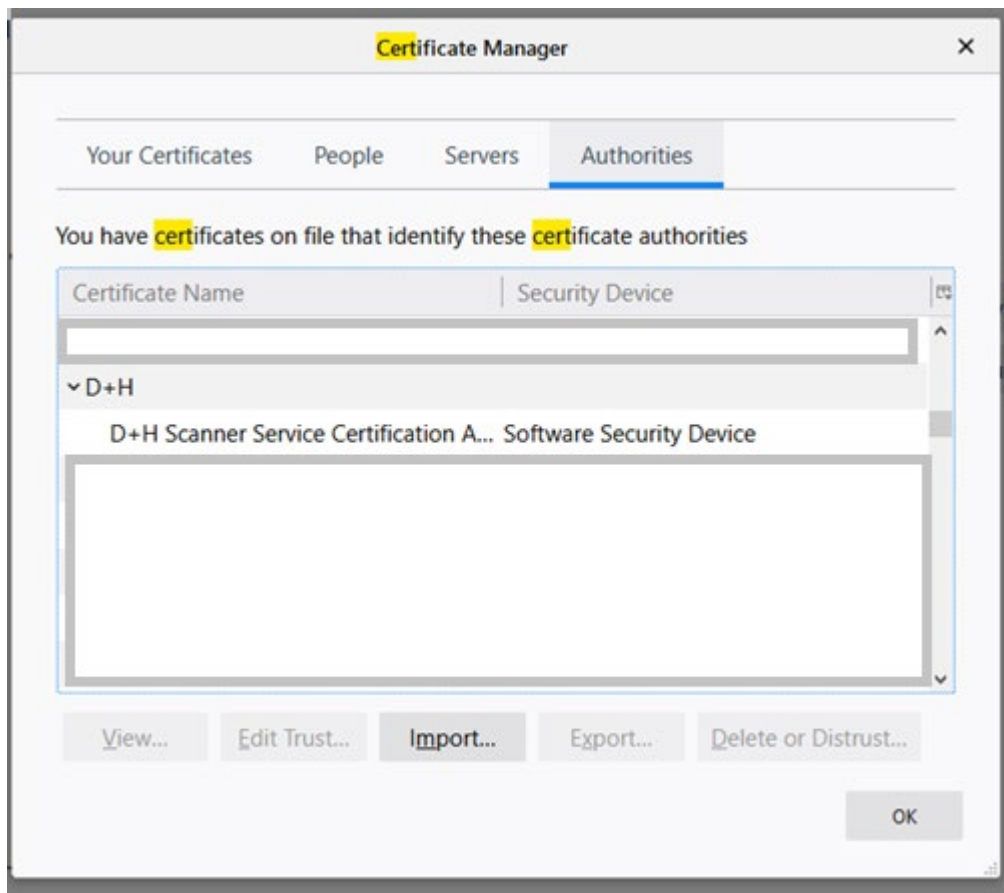
9. Select the certificate file from the Downloads folder and click **Open**.



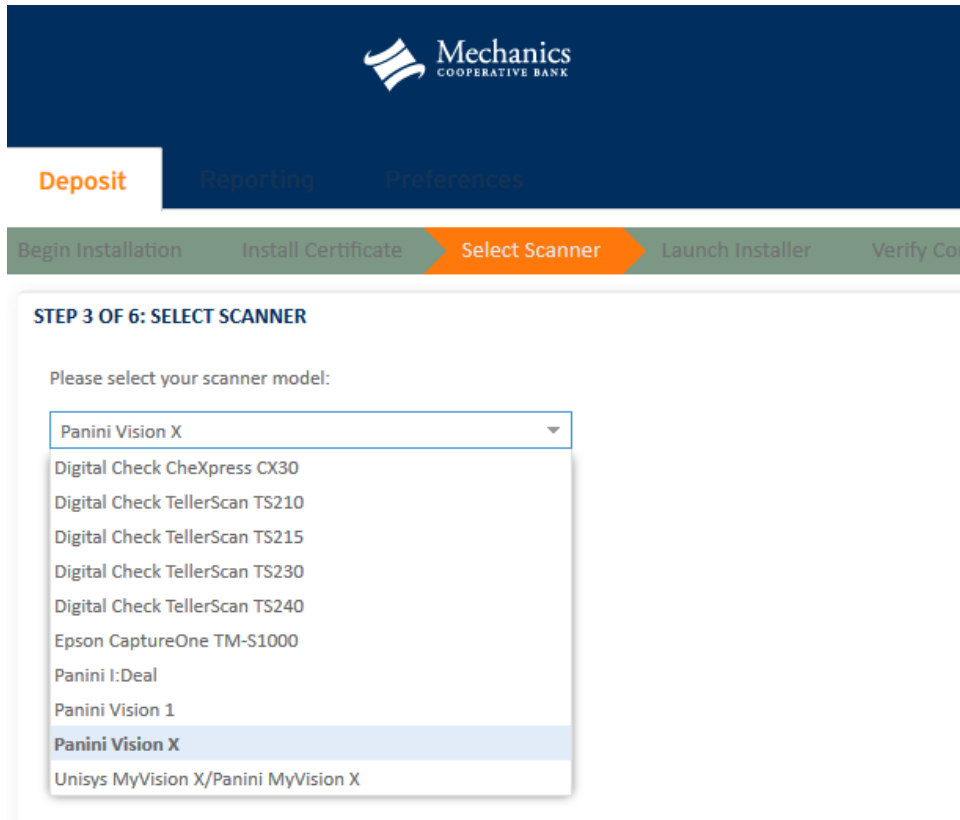
10. A notification window appears. Mark the checkbox **Trust this CA to identify websites** and click **OK**.



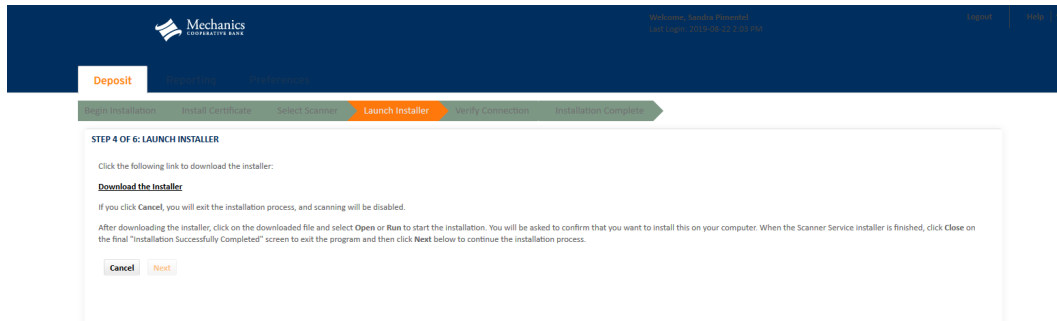
11. Make sure that a new entry **D+H Scanner Service Certification Authority** appears in the list of certificates on file then click **OK**.



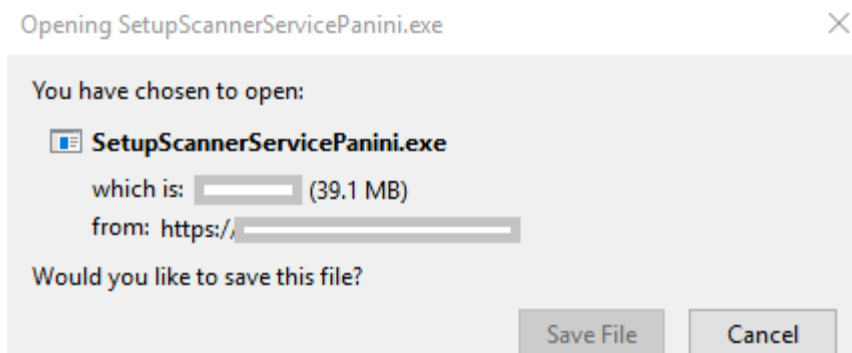
12. Close the **Options** browser tab to return to the **Install Certificate** page and click **Next**.
13. The **Select Scanner** screen appears. Select your scanner model from the drop-down box and click **Next**.



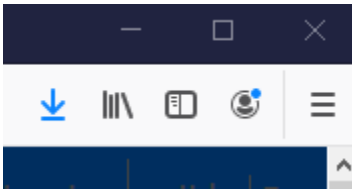
14. The **Launch Installer** screen appears. Click the **Download the Installer** link.



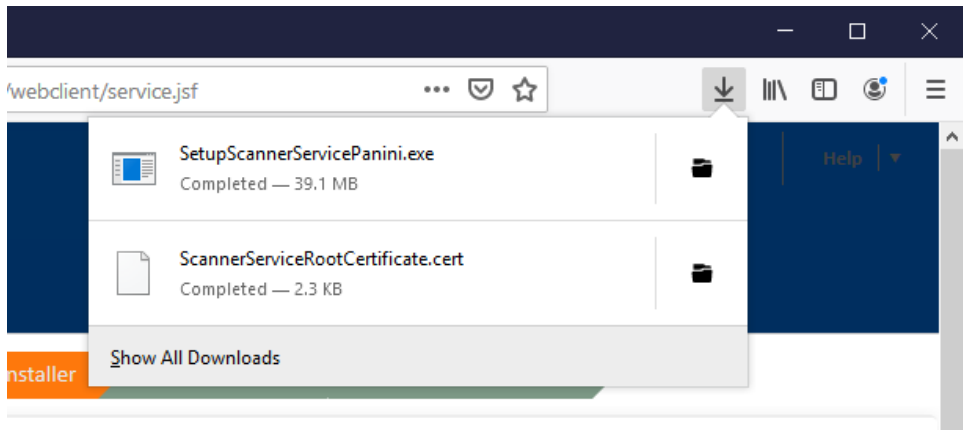
15. A dialog box appears asking if you would like to save the file. Click **Save File**.



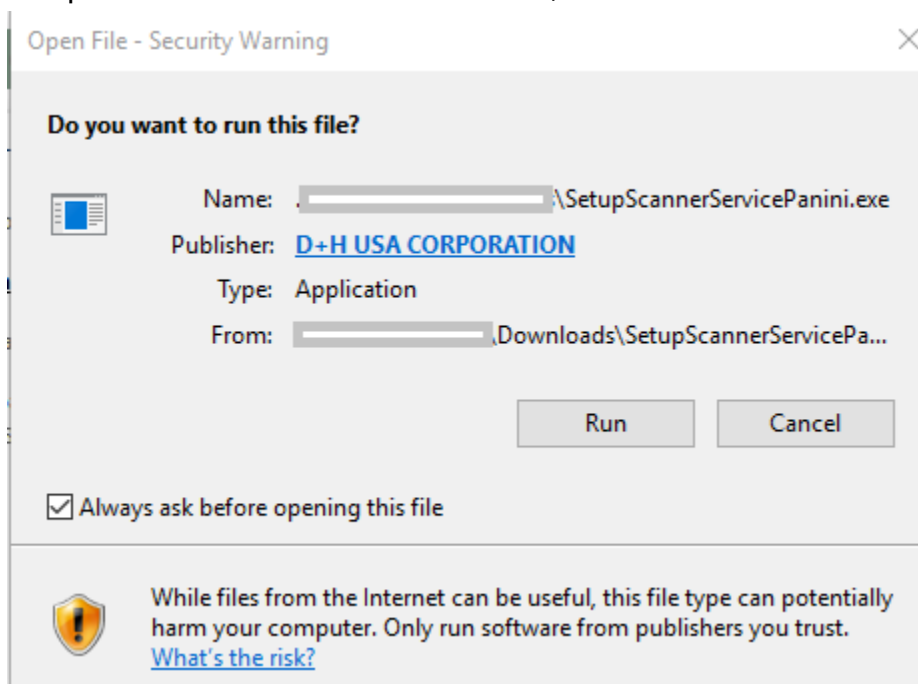
16. Go to your downloads by clicking on the arrow in the top right of the browser toolbar.



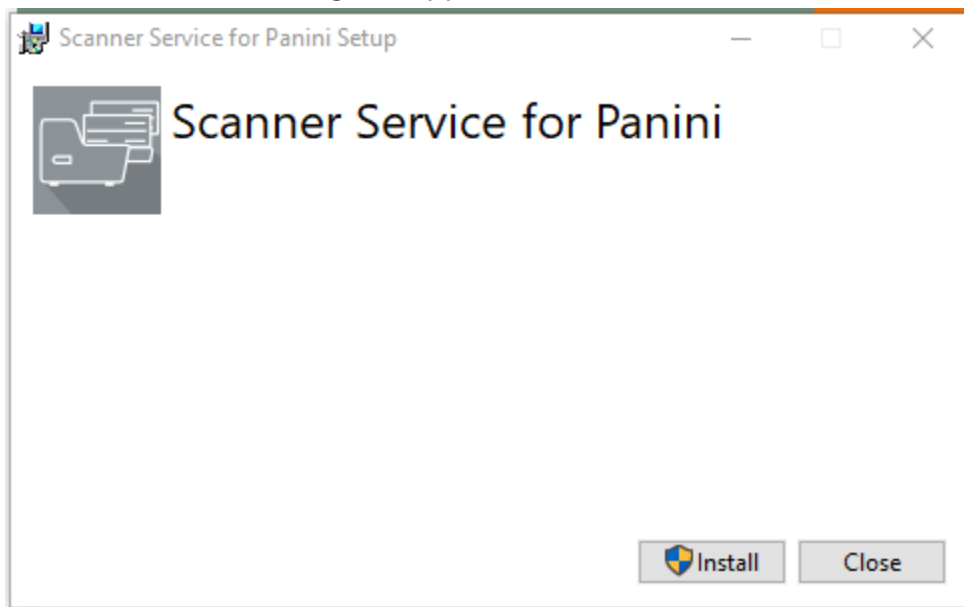
17. Select your scanner file (not the certificate file) from the list of downloads.



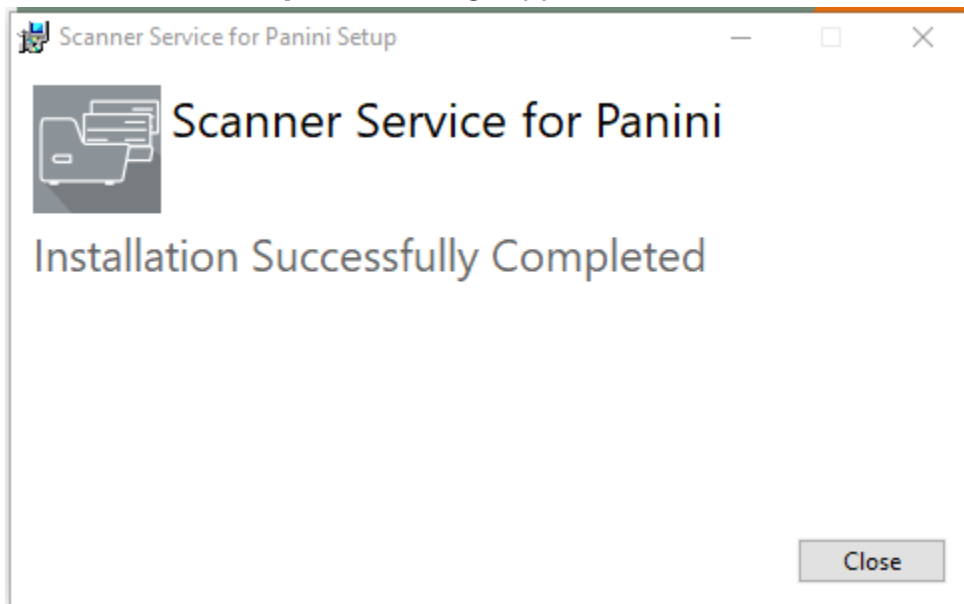
18. A Security Warning message appears asking if you would like to run the program. To accept the software and allow it to install, click **Run**.



19. A **Scanner Service** dialog box appears. Click **Install**.



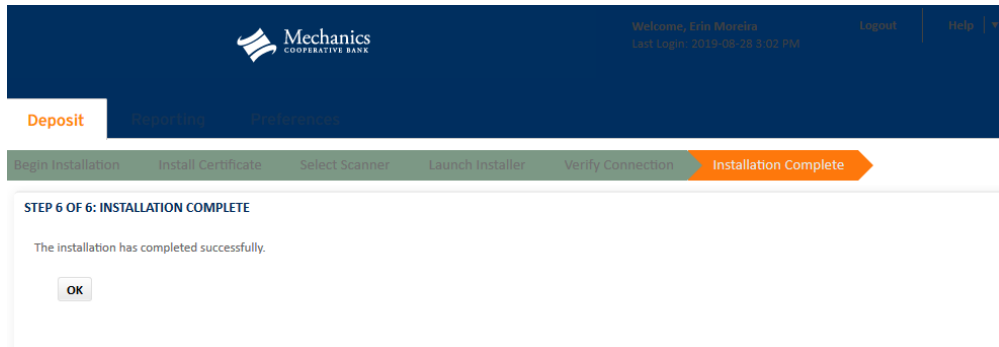
20. An **installation Completed** message appears. Click **Close**.



21. After the scanner drivers are installed, the **Launch Installer** screen reappears. Click **Next**.

22. The **Verify Connection** screen appears. Ensure that the scanner is turned on and connected to your computer then click **Next**. Wait while the scanner initializes.

23. The **Installation Complete** screen appears. Click **OK** to exit from the installer. You can now begin creating a new deposit.

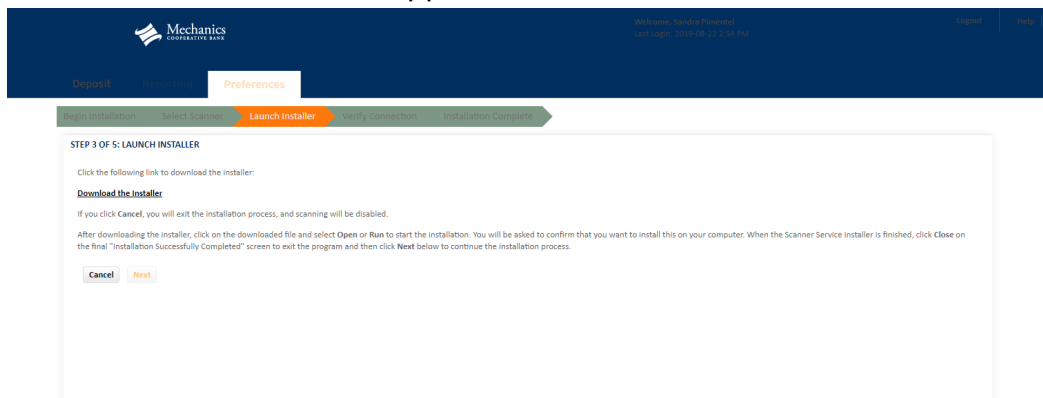


Chrome

1. The **Begin Installation** screen appears. Click **Next** to continue with scanner installation.
2. The **Select Scanner** screen appears. Select your scanner model from the drop-down box and click **Next**.

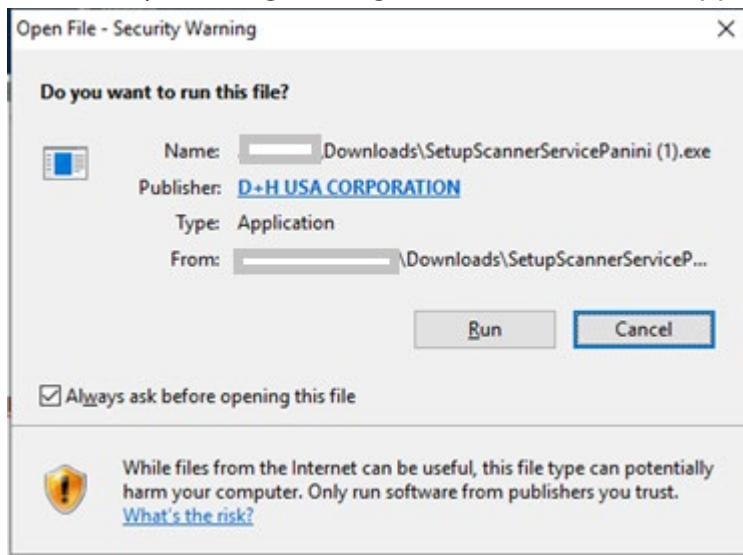


3. The **Launch Installer** screen appears. Click the **Download the Installer** link.

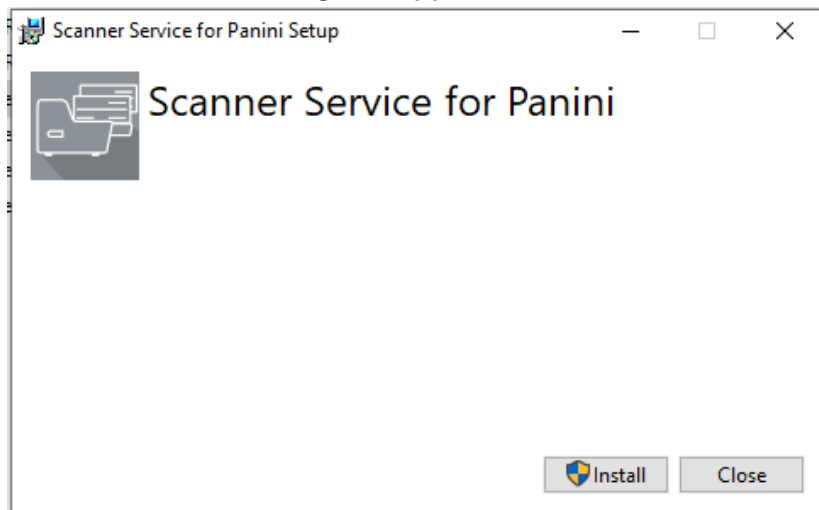


4. At the bottom left of the screen, click the name of the downloaded file to open it.

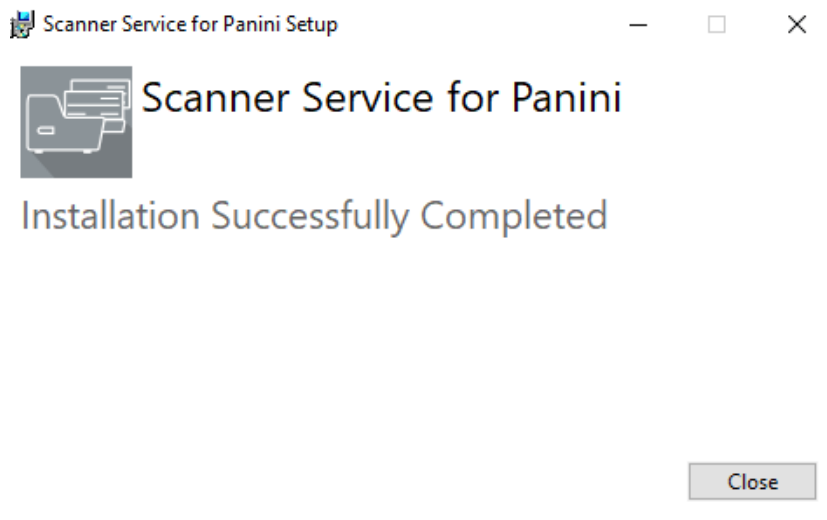
5. If a Security Warning message or confirmation box appears. Click **Run**.



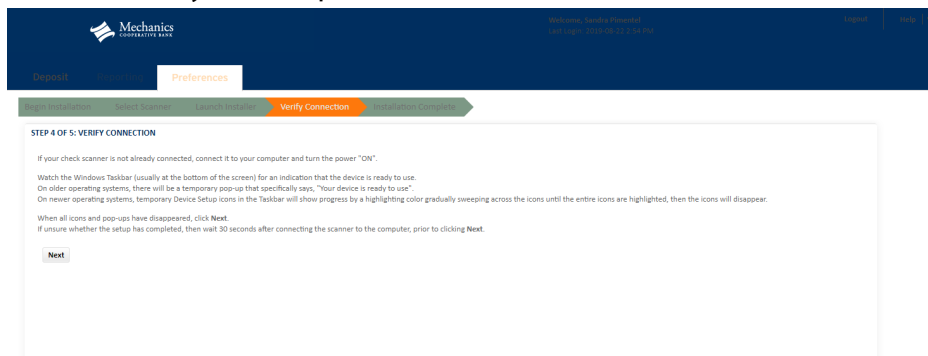
6. A Scanner Service dialog box appears. Click **Install**.



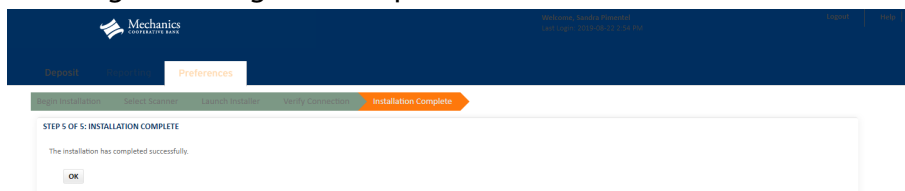
7. An **installation Completed** message appears. Click **Close**.



8. After the scanner drivers are installed, the **Launch Installer** screen reappears. Click **Next**.
9. The **Verify Connection** screen appears. Ensure that the scanner is turned on and connected to your computer then click **Next**. Wait while the scanner initializes.

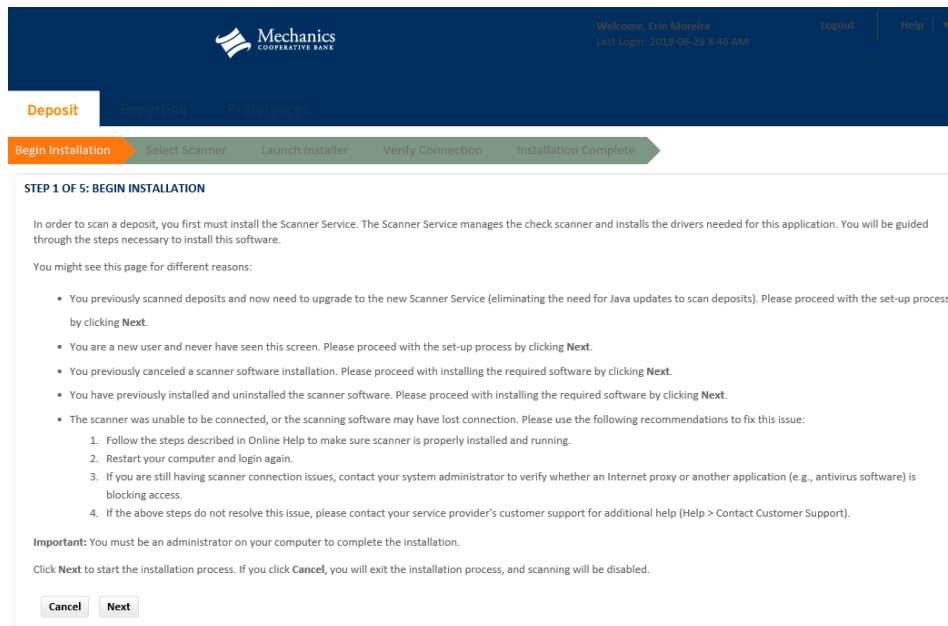


10. The **Installation Complete** screen appears. Click **OK** to exit from the installer. You can now begin creating a new deposit.



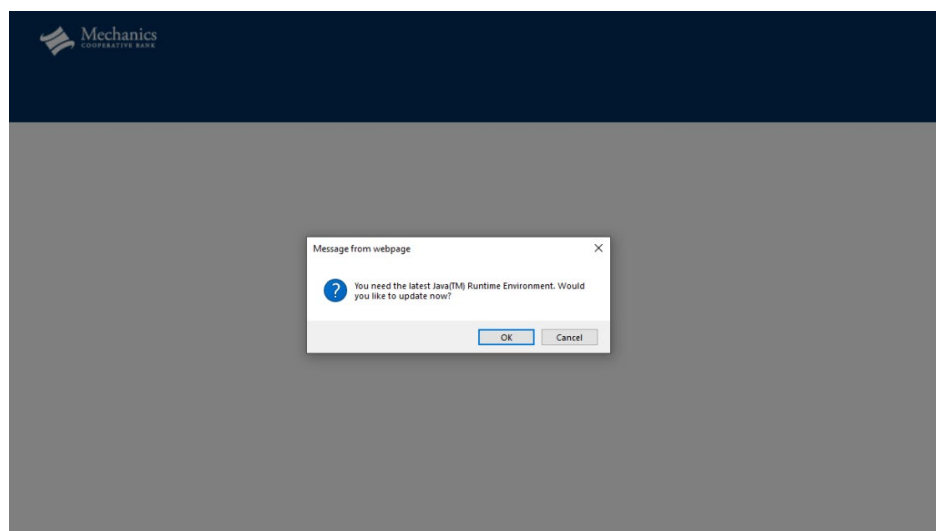
Internet Explorer

1. If the **Begin Installation** screen appears, then Click **Next** and continue with scanner installation on step 2.



If there is a prompt to update the **Java(TM) Runtime Environment** follow these instructions to download Java.

- a. Click **OK** on the webpage message box.

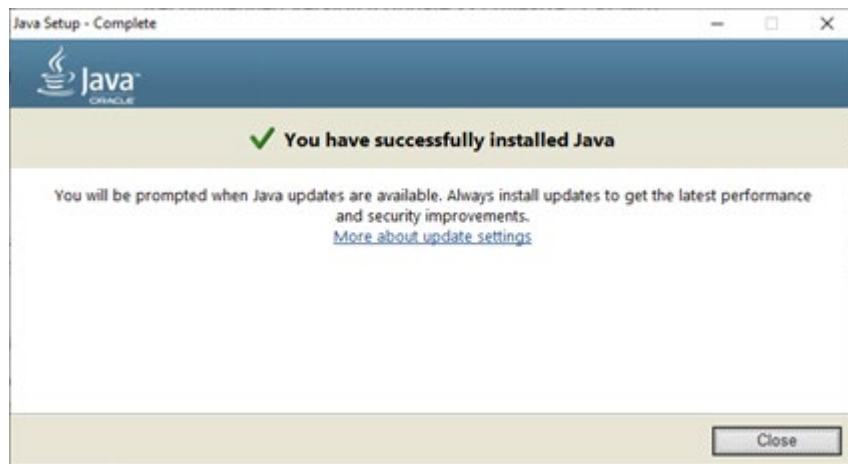


- b. A Java page will appear asking you to accept the license agreement. Click **Agree and Start Free Download**.



By downloading Java you acknowledge that you have read and accepted the terms of the [Oracle Technology Network License Agreement for Oracle Java SE](#)

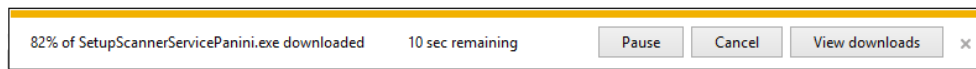
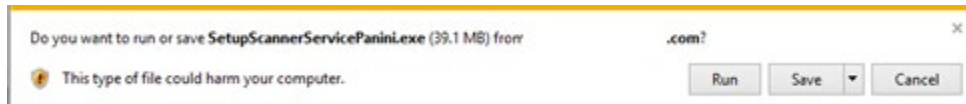
- c. Once you have successfully installed Java, a message will notify you. Click **Close**.



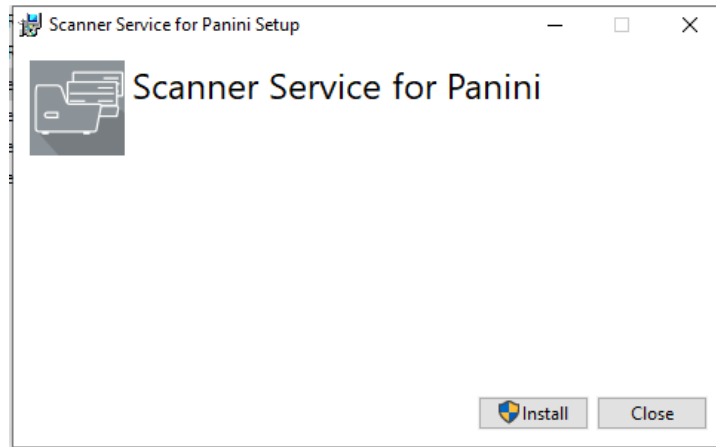
- d. The **Begin Installation** screen appears. Click **Next**.
- e. The **Unplug Scanner** screen appears. Ensure that your scanner is powered off and disconnected from your computer. Click **Next**.
2. The **Select Scanner** screen appears. Select your scanner model from the drop-down box and click **Next**.

3. The **Launch Installer** screen appears. Click the **Download the Installer** link.

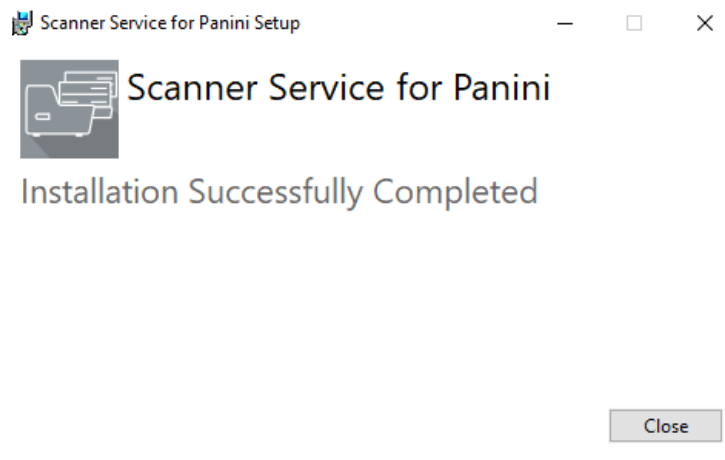
4. At the bottom of the screen one or more security messages may appear. Click **Run** and wait for the download to finish.



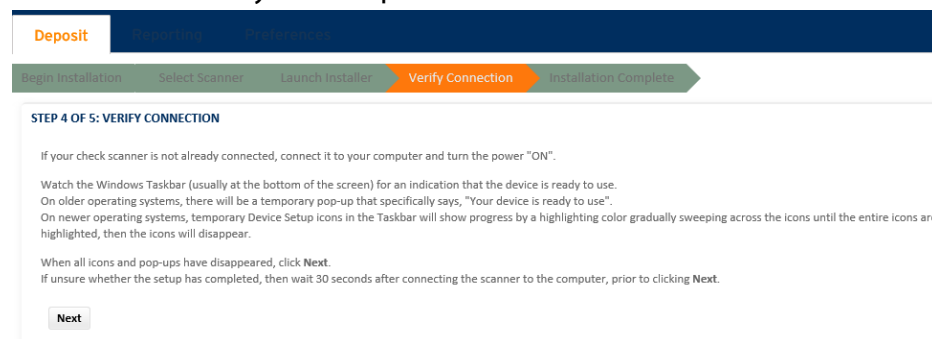
5. Depending on the configurations set by your service organization, you may see different set up screens. If you remain on the **Launch Scanner** screen and see a **Scanner Service** dialog box proceed to Step 6. However if the computer automatically proceeds to an **Install Driver** and **Driver Synchronization** screen skip Step 6 and proceed to Step 7.
6. **Launch Scanner** screen and **Scanner Service** setup:
 - a. Click **Install**.



- b. An **Installation Completed** message appears. Click **Close**.

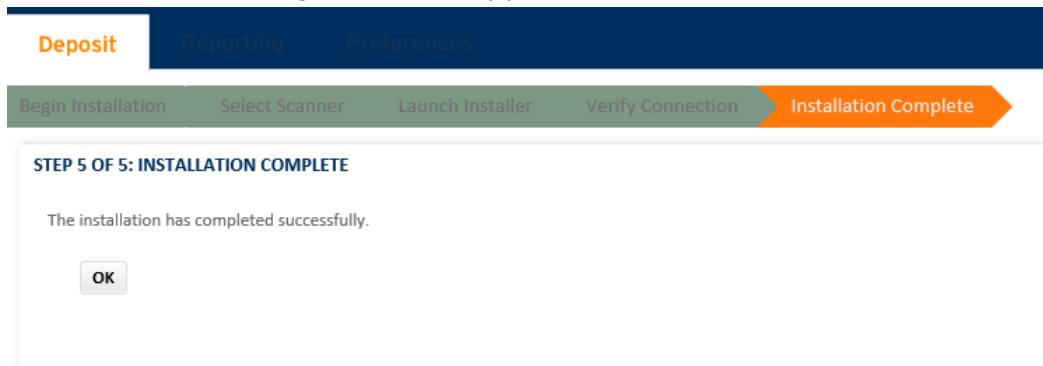


- c. After the scanner drivers are installed, on the **Launch Installer** click **Next**.
 d. The **Verify Connection** screen appears. Ensure that the scanner is turned on and connected to your computer then click **Next**.



- e. Wait while the scanner initializes and finishes the synchronization process.
 f. Proceed to Step 8 **Installation Complete**.
 7. **Install Driver and Driver Synchronization** screen:
 a. The **Driver Synchronization** screen automatically appears.
 b. Ensure that the scanner is turned on and connected to your computer, and then click **Next**.

- c. Wait while the scanner initializes and finishes the synchronization process.
8. The **Installation Complete** screen appears. Click **OK** to exit from the installer.



9. You can now begin creating a new deposit.